

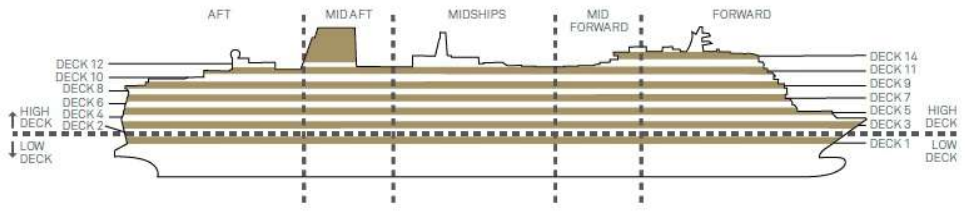
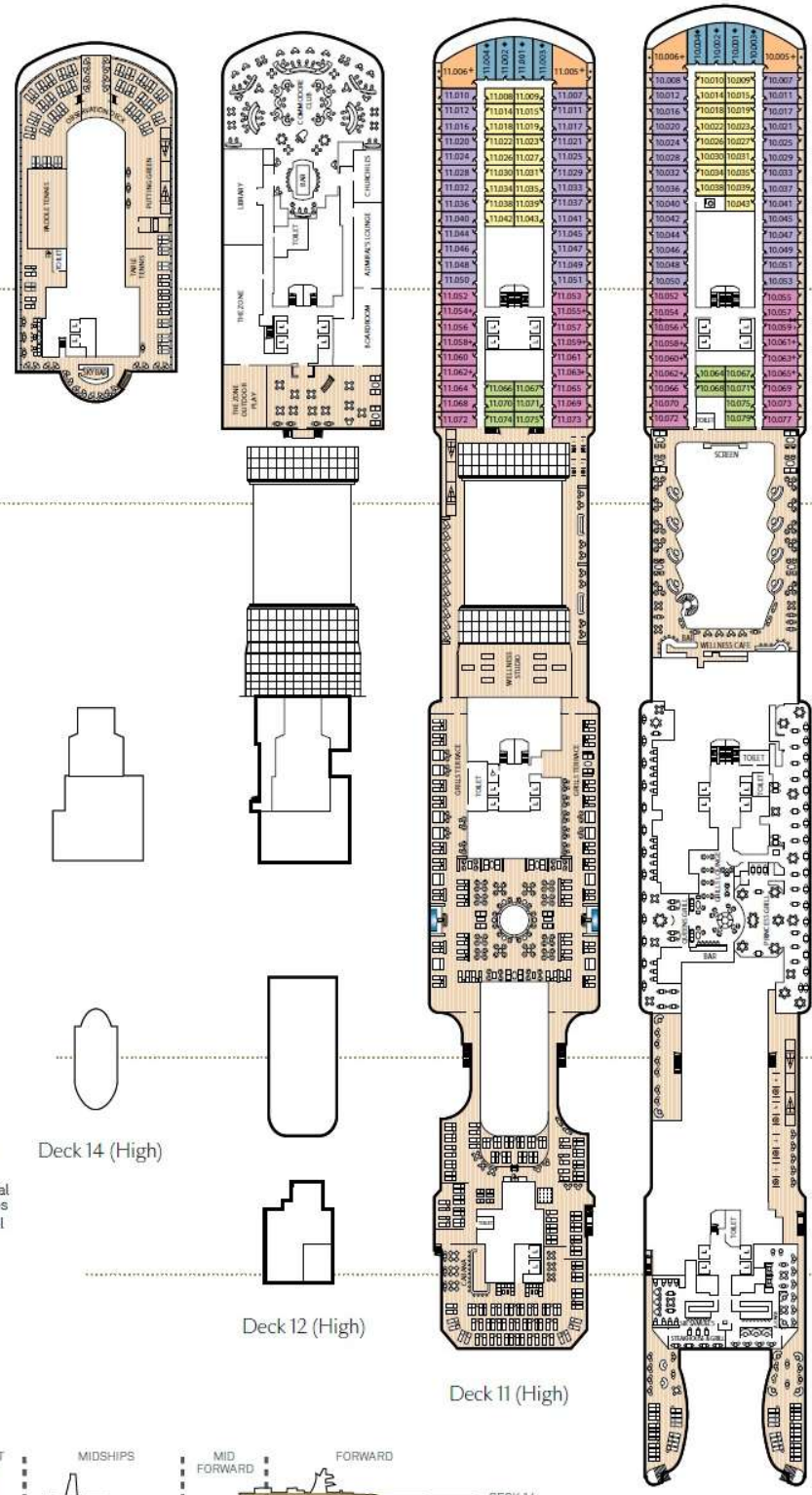
Stateroom Category

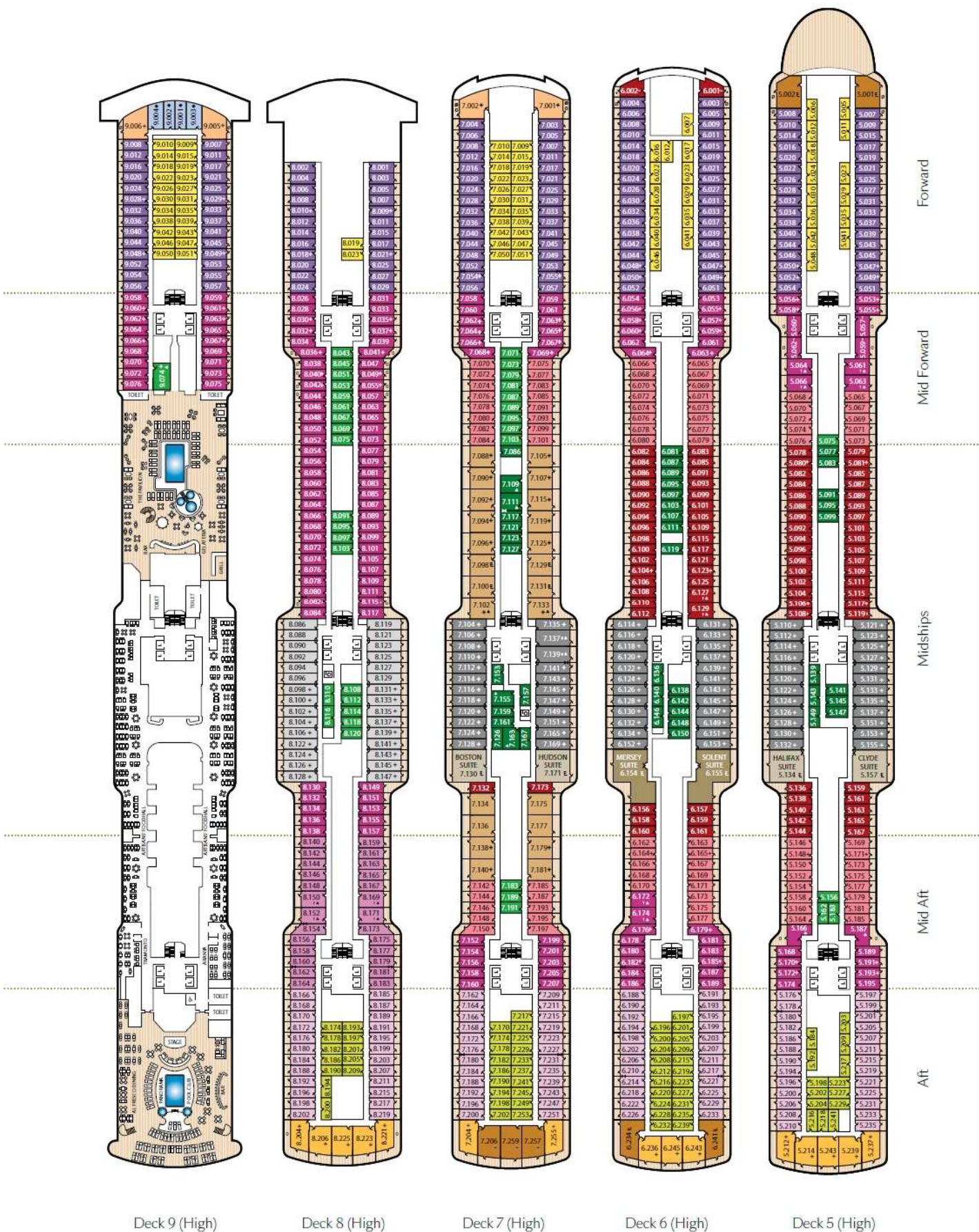
Queen Anne deck plans

- Grand Suites**
- Midships High Deck 6 Q1
- Master Suite**
- Midships High Decks 5,7 Q2
- Penthouse**
- Forward/Aft High Decks 4,5,6,7 Q3
- Midships High Deck 7 Q4
- Queen Suites**
- Aft High Decks 4,5,6,7,8 Q5
- Forward High Decks 7,9,10,11 Q6
- Princess Suites**
- Midships High Decks 5,6,7 P1
- Midships High Decks 4,8 P2
- Club Balcony**
- Mid/Fwd High Decks 5,6,7 A1
- Midships High Decks 5,6,7 A2
- Balcony**
- Midships High Decks 5,6,7,8,9 BB
- Midships High Decks 4,8,10,11 BC
- Aft High Decks 5,6,7,8 BD
- Aft/Forward High Decks 4,5,6,7,8,9 BE
- Forward High Decks 4,10,11 BF
- Balcony (obstructed view)**
- Midships High Deck 4 DB
- Midships High Deck 4 DC
- Deluxe Oceanview**
- Midships Low Deck 1 EA
- Oceanview**
- Midships Low Deck 1 EB
- Midships Low Deck 1 EC
- Aft/Forward Low Deck 1 EE
- Aft/Forward High Deck 9 EE
- Forward High Decks 4,10,11 EF
- Standard Inside**
- Midships High Decks 5,6,7 IA
- Midships Low Deck 1 IB
- Midships High Deck 9 IB
- Midships Low Deck 1 IC
- High Decks 4,10,11 IC
- Aft High Decks 5,6,7,8 ID
- Aft/Forward High Decks 4,5,6,7,8,9 IE
- Forward High Decks 4,10,11 IF

Key to symbols

- L Lift
- † Indicates 2 lower berths and 1 upper berth
- + Indicates 3rd berth is a single sofa bed
- ‡ Indicates 3rd and 4th berth is a double sofa bed
- ‡ Indicates 3rd and 4th berth are a single sofa bed and one upper bed
- ↔ Connecting staterooms
- o Balcony is shaded by deck structure above
- ▲ Wheelchair accessible
- ~ Indicates alternative layout and configuration
- ◆ Staterooms have forward facing ocean views
- ◐ Staterooms have partial metal fronted balconies
- Staterooms have metal fronted balconies





Stateroom Category

Grand Suites		
Midships High Deck 6	Q1	
Master Suite		
Midships High Decks 5,7	Q2	
Penthouse		
Forward/Aft High Decks 4,5,6,7	Q3	
Midships High Decks 7	Q4	
Queen Suites		
Aft High Decks 4,5,6,7,8	Q5	
Forward High Decks 7,9,10,11	Q6	
Princess Suites		
Midships High Decks 5,6,7	P1	
Midships High Decks 4,8	P2	
Club Balcony		
Mid/Fwd High Decks 5,6,7	A1	
Midships High Decks 5,6,7	A2	
Balcony		
Midships High Decks 5,6,7,8,9	BB	
Midships High Decks 4,8,10,11	BC	
Aft High Decks 5,6,7,8	BD	
Aft/Forward High Decks 4,5,6,7,8,9	BE	
Forward High Decks 4,10,11	BF	
Balcony (obstructed view)		
Midships High Deck 4	DB	
Midships High Deck 4	DC	
Deluxe Oceanview		
Midships Low Deck 1	EA	
Oceanview		
Midships Low Deck 1	EB	
Midships Low Deck 1	EC	
Aft/Forward Low Deck 1	EE	
High Deck 9	EF	
Forward High Decks 4,10,11	EF	
Standard Inside		
Midships High Decks 5,6,7	IA	
Midships Low Deck 1	IB	
High Deck 9	IB	
Midships Low Deck 1	IC	
High Decks 4,10,11	IC	
Aft High Decks 5,6,7,8	ID	
Aft/Forward High Decks 4,5,6,7,8,9	IE	
Forward High Decks 4,10,11	IF	

Key to symbols

- L Lift
- † Indicates 2 lower berths and 1 upper berth
- + Indicates 3rd berth is a single sofa bed
- ⊕ Indicates 3rd and 4th berth is a double sofa bed
- ⊞ Indicates 3rd and 4th berth are a single sofa bed and one upper berth
- ↔ Connecting staterooms
- * Staterooms have views obstructed by lifeboats and during Panama Canal transits lifeboats are adjacent to the balcony
- v Balcony visible from above
- ▲ Wheelchair accessible
- ▲ Indicates alternative layout and configuration
- ∞ Staterooms have an additional shower room
- Staterooms have metal fronted balconies

Ship facts - Queen Anne	
Maiden Season:	2024
Speed:	22 knots
Guest Capacity:	2,996
No. of Crew:	1,225
Length Overall:	1,058 feet
Width:	116.8 feet
Draft:	27.2 feet

